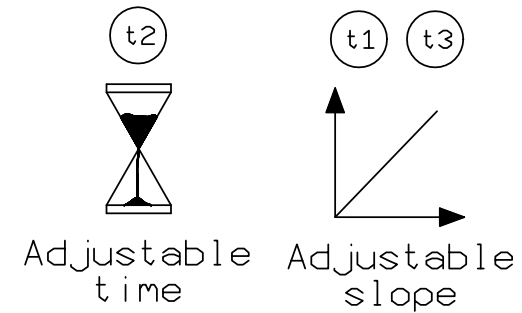
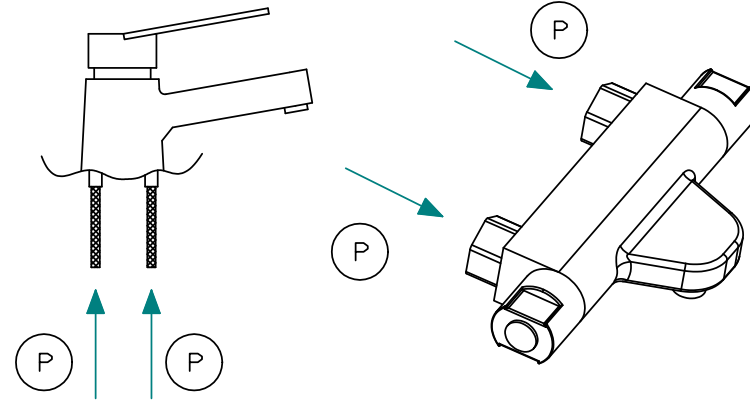
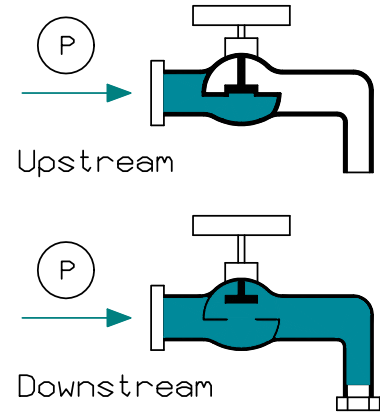
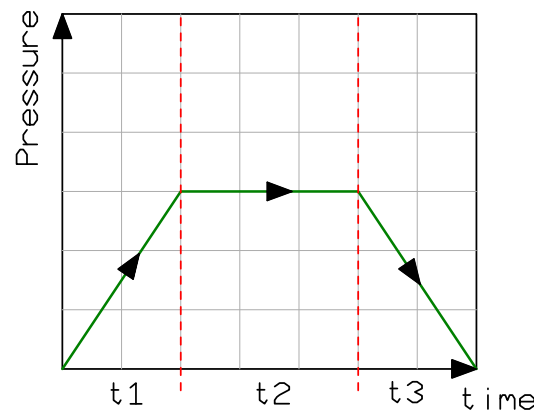


CODE: P01

STATIC TEST

sw: AQ2TB-STATICAUT



PRESSURE OPERATING RANGE
UPSTREAM
of the obturator: 0-16 bar
DOWNSTREAM
of the obturator: 0-25 bar

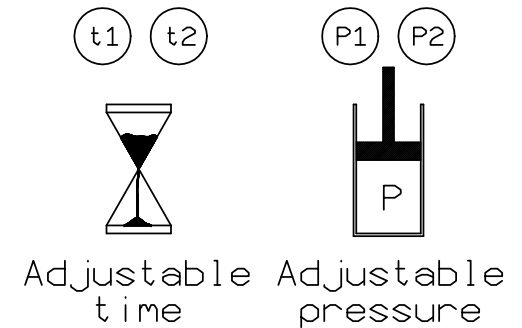
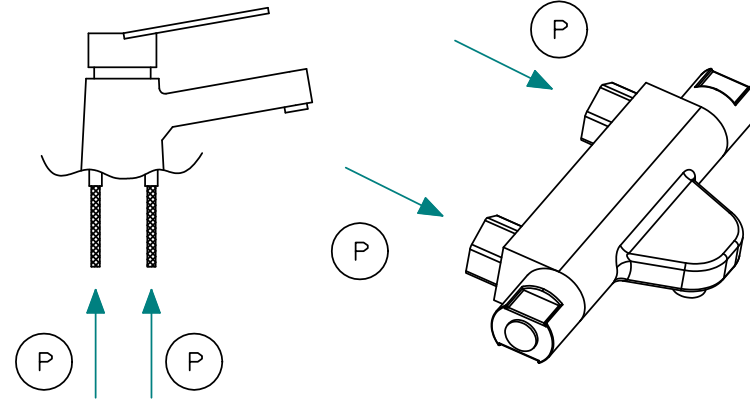
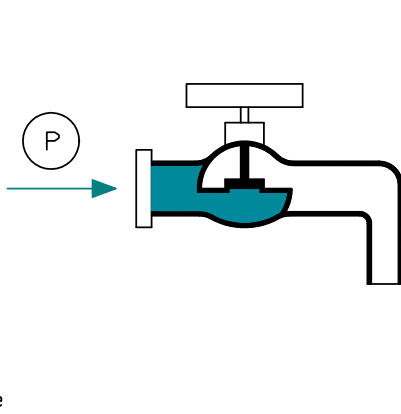
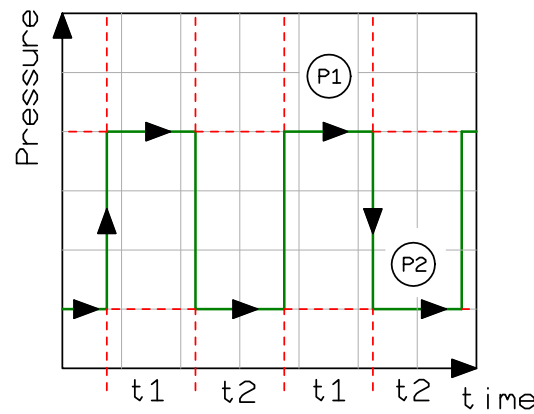
EXEMPLE OF STANDARD REFERENCE:

EN 200 cap. 8 - 9
EN 817 cap. 8 - 9
EN 1111 cap. 9 - 11

CODE: P02

PULSING TEST

sw: AQ2TB-PULSEAUT



PRESSURE OPERATING RANGE
Minimum pressure: 0-8 bar
Maximum pressure: 2-50 bar

EXEMPLE OF STANDARD REFERENCE:

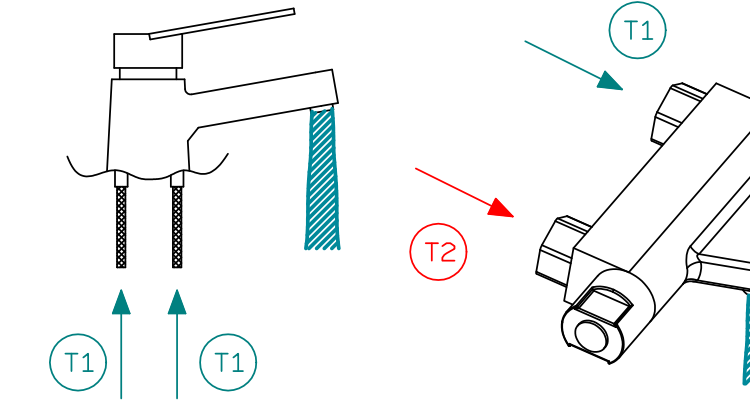
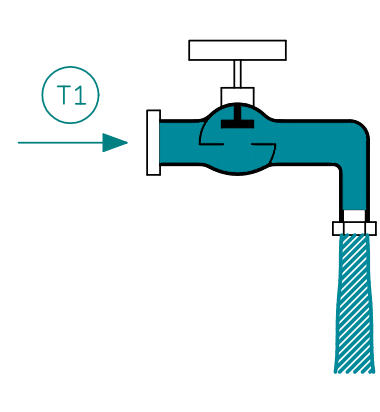
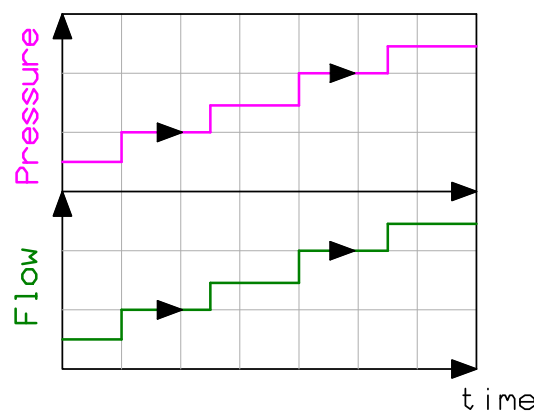
NF 077 2-3 - Classement ECAU

Cold water

CODE: F05

FLOW TEST - STEP PRESSURE

sw: AQ2TB-FLOW-STEP



Step number
(adjustable)
2-30

Step pressure
(adjustable)
0,1-6 bar

EXEMPLE OF STANDARD REFERENCE:

EN 200 cap. 10 - cold water
EN 817 cap. 10.6 - cold & hot water
EN 1111 cap. 10.5 - cold & hot water

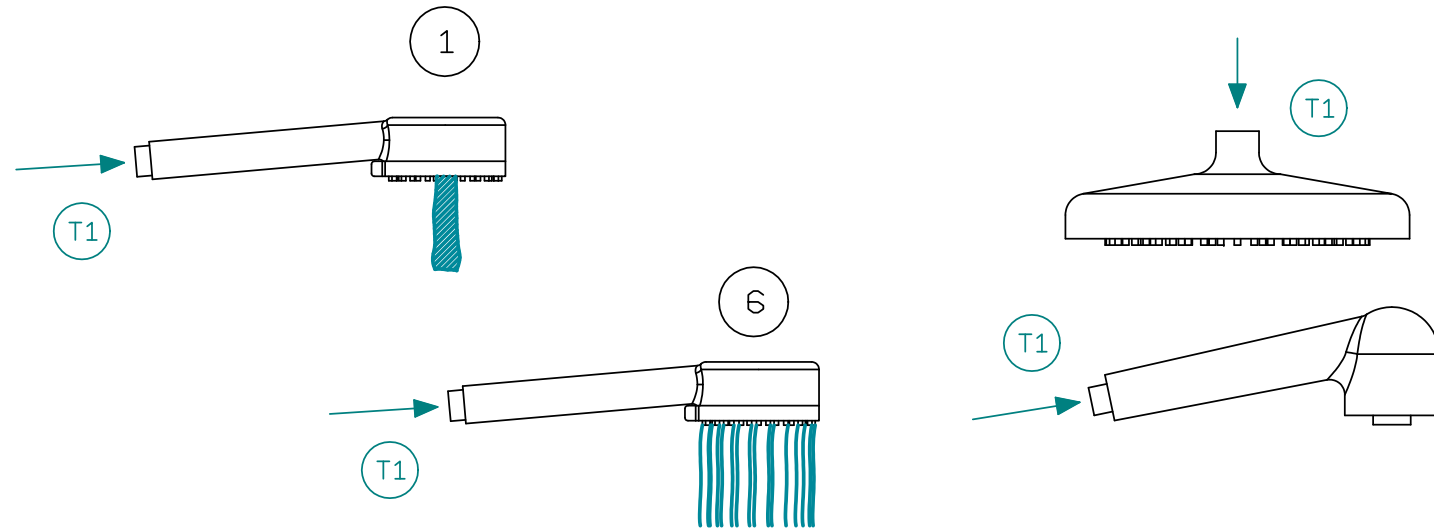
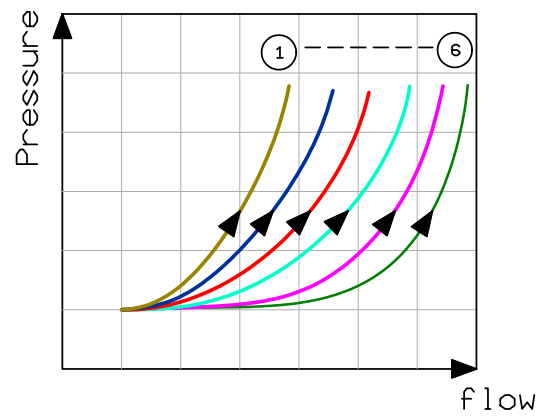
T1: Cold water temperature

T2: Hot water temperature

CODE: F06

FLOW TEST - LINEAR PRESSURE

sw: AQ2TB-FLOW-LIN



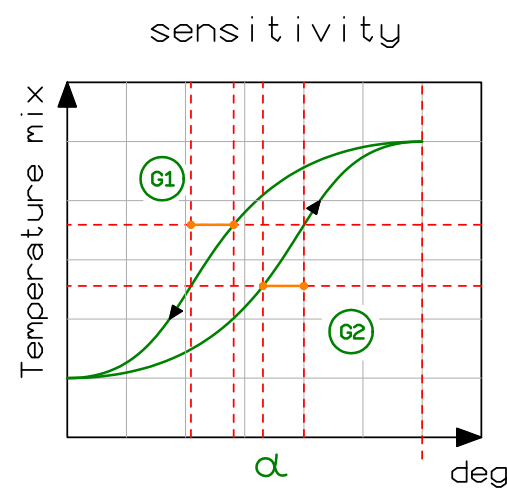
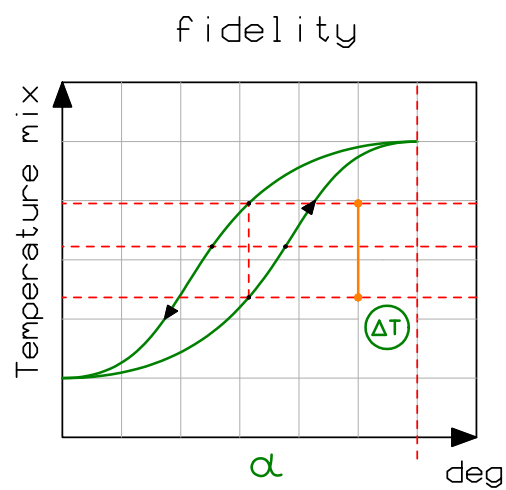
EXEMPLE OF STANDARD REFERENCE
EN 200 cap. 10

T1: Cold water temperature

CODE: SF01

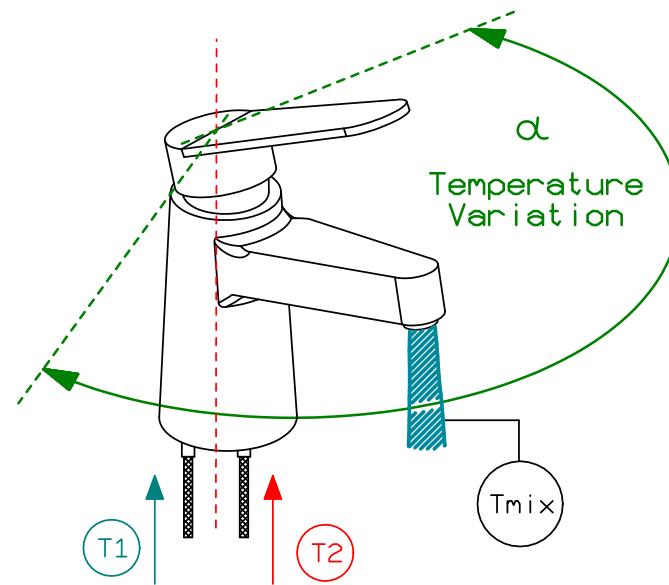
SENSITIVITY & FIDELITY TEST

sw: AQ2TB-COMBILAB+
sw: AQ2TB-F+S-DRIVE



T1: Cold water temperature

T2: Hot water temperature



TEST OF MIXED TEMPERATURE
HISTERESYS AND SENSITIVITY
BY MOVING THE TEMPERATURE
SETTING DEVICE FROM COLD TO
HOT POSITION AND RETURNING TO
INITIAL POSITION

EXEMPLE OF STANDARD REFERENCE
EN 817 cap. 10.7
EN 1111 cap. 10.6

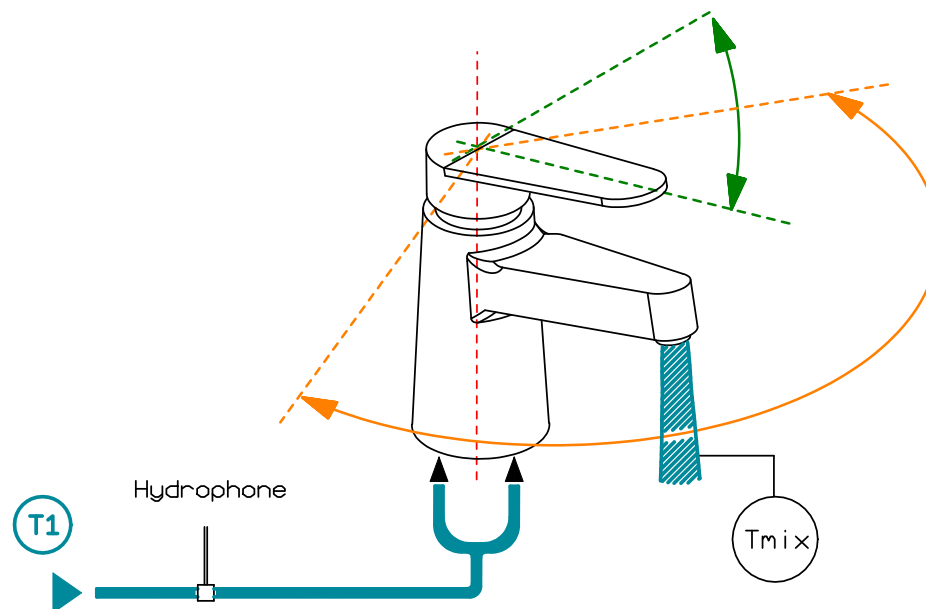
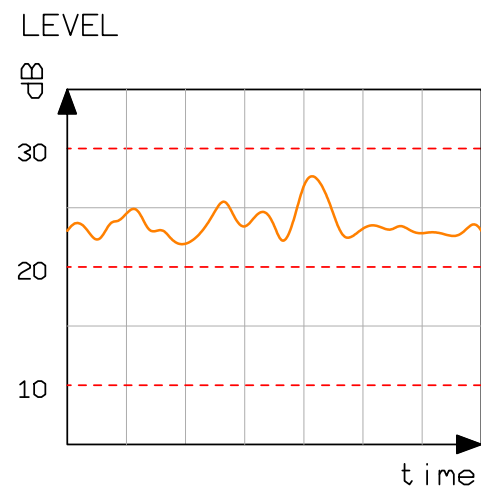
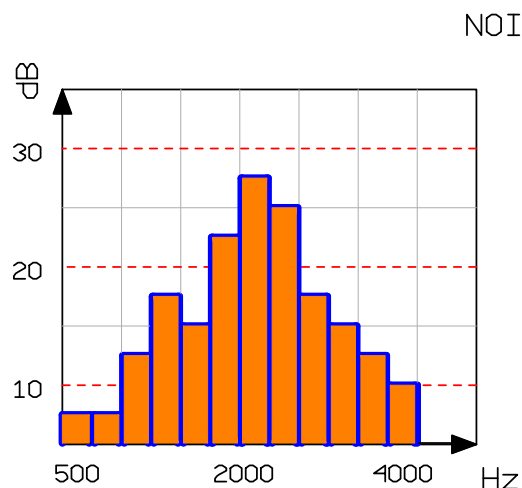
ΔT Evaluations

G1 G2 Evaluations

CODE: ATO1

ACOUSTIC TEST

sw: AQ2TB-NOISE



MEASUREMENT OF NOISE
EMISSION FROM APPLIANCE
AND EQUIPMENT USED IN
WATER SUPPLY INSTALLATIONS

EXEMPLE OF STANDARD REFERENCE
EN 200 cap. 14
EN 817 cap. 14
EN 1111 cap. 14

T1: Cold water temperature