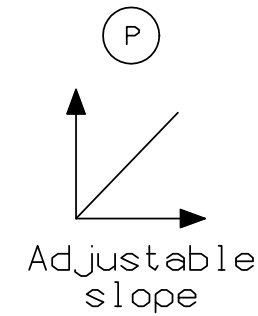
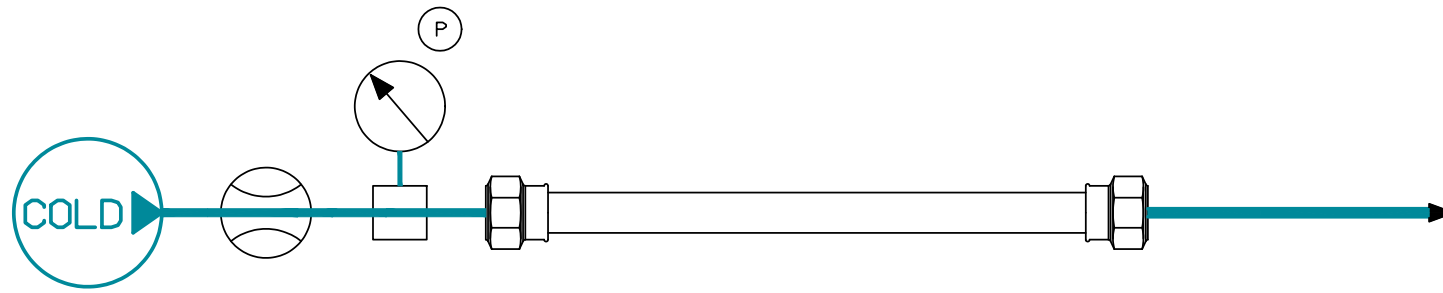
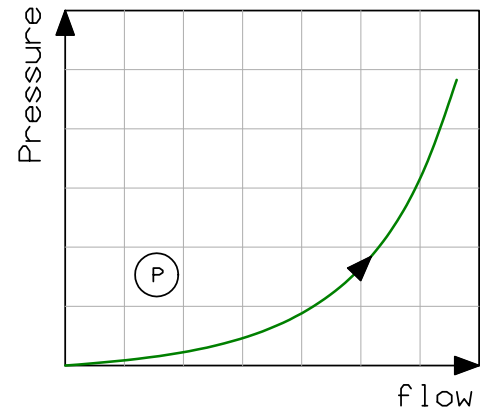


CODE: F01 FLOW RATE AT DIFFERENT PRESSURE

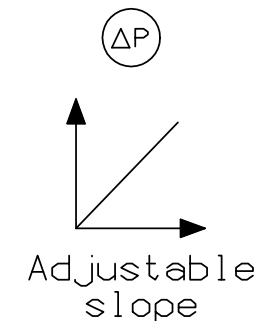
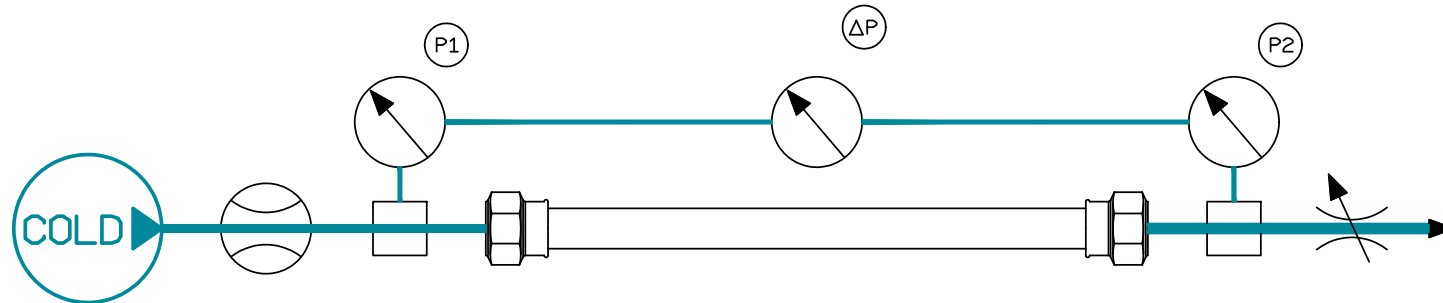
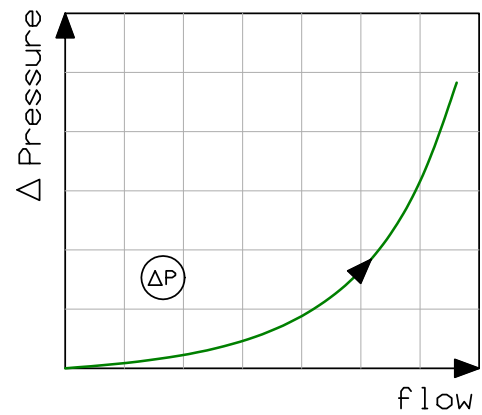
sw: AQ2TB-FLOW-LIN



PRESSURE OPERATING RANGE  
BASE MODEL: 1 - 6 bar  
EXTENTION TO: 12 bar  
FLOW RATE OPERATING RANGE  
BASE MODEL: 1 - 100 L/min  
EXTENTION TO: 250 - 500 L/min

CODE: F02 FLOW RATE AT DIFFERENT  $\Delta P$  PRESSURE

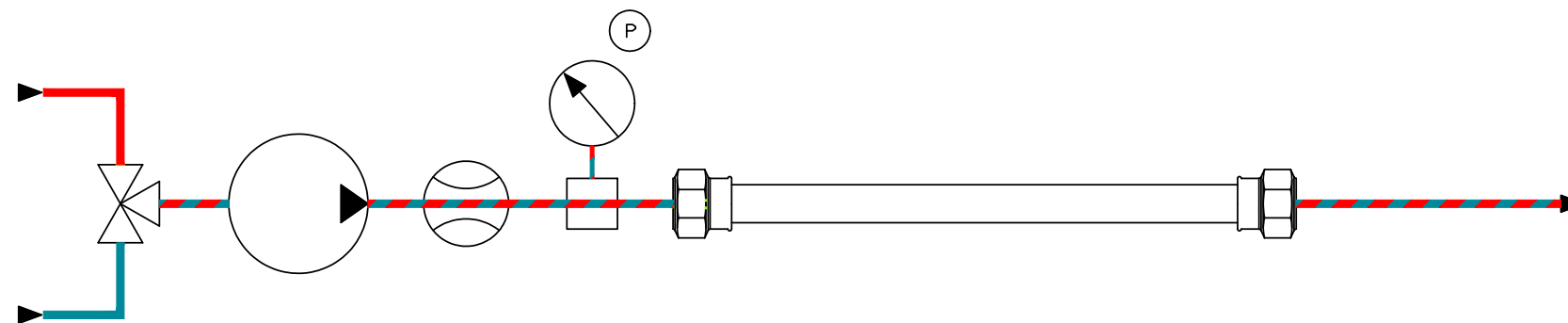
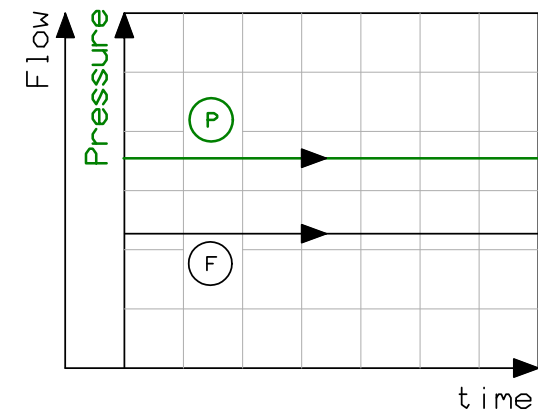
sw: AQ2TB-KV-LAB



PRESSURE OPERATING RANGE  
SUPPLY PRESSURE: 1 - 6 bar  
 $\Delta P$  PRESSURE: 0 - 1,2 bar  
FLOW RATE OPERATING RANGE  
BASE MODEL: 1 - 100 L/min  
EXTENTION TO: 250 - 500 L/min

CODE: F03 LIFE TEST WITH HOT OR COLD WATER AT CONSTANT P

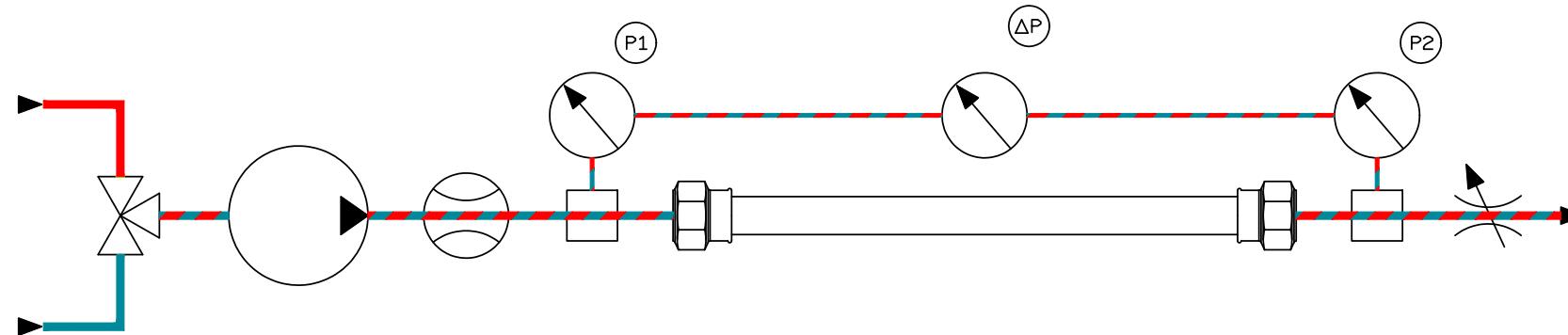
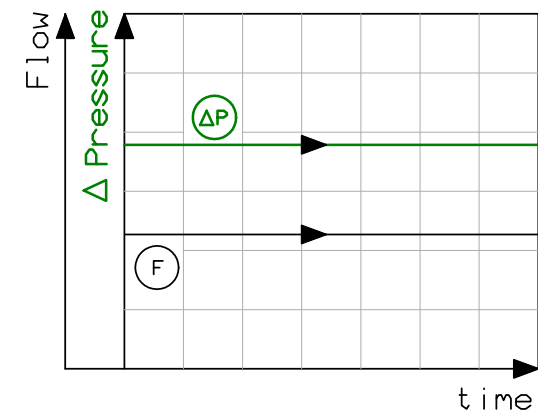
sw: AQ2TB-\*



PRESSURE OPERATING RANGE  
BASE MODEL: 1 - 6 bar  
EXTENTION TO: 12 bar  
FLOW RATE OPERATING RANGE  
BASE MODEL: 1 - 100 L/min  
EXTENTION TO: 250 - 500 L/min

CODE: F04 LIFE TEST WITH HOT OR COLD WATER AT CONSTANT  $\Delta P$

sw: AQ2TB-\*



PRESSURE OPERATING RANGE  
SUPPLY PRESSURE: 1 - 6 bar  
 $\Delta P$  PRESSURE: 0 - 1,2 bar  
FLOW RATE OPERATING RANGE  
BASE MODEL: 1 - 100 L/min  
EXTENTION TO: 250 - 500 L/min